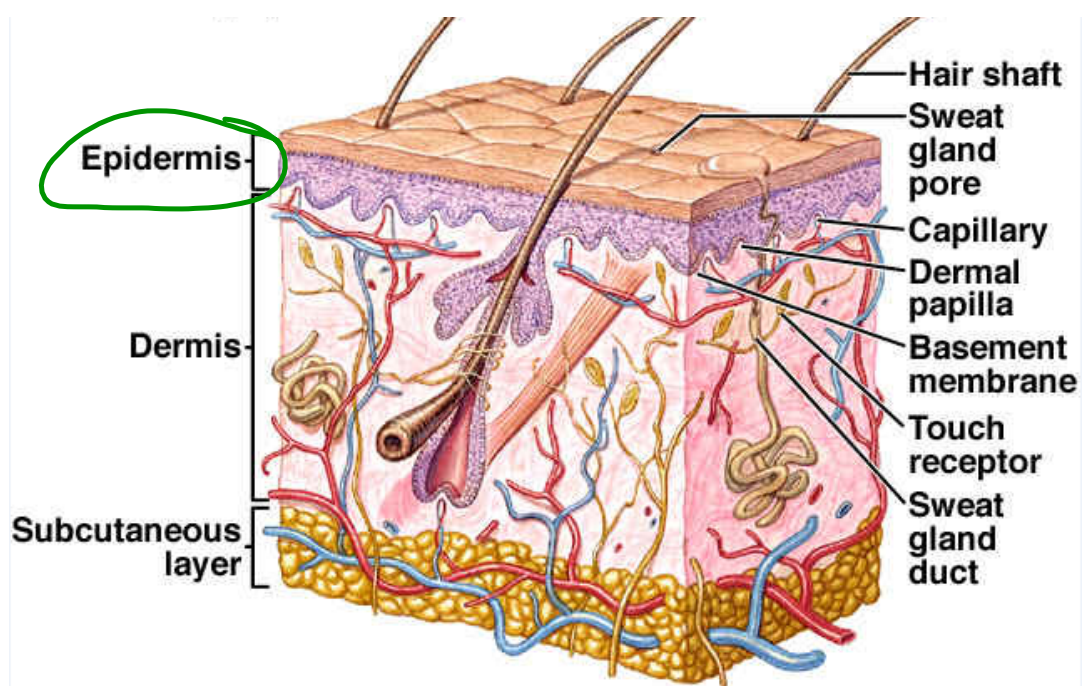


The Epidermis



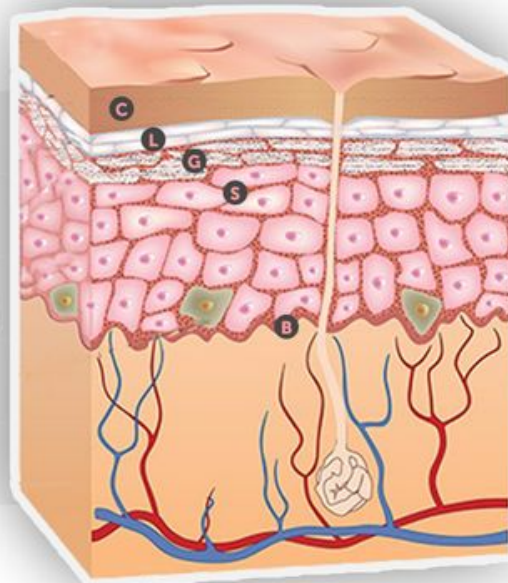
ANATOMY AND PHYSIOLOGY

NURSING MNEMONICS & TIPS

LAYERS OF
THE EPIDERMIS"COME LET'S GET SUN BURNED!"

Stratum

C CORNEUM
L LUCIDUM
G GRANULOSUM
S SPINOSUM
B BASALE



© 2015 Nurseslabs.com

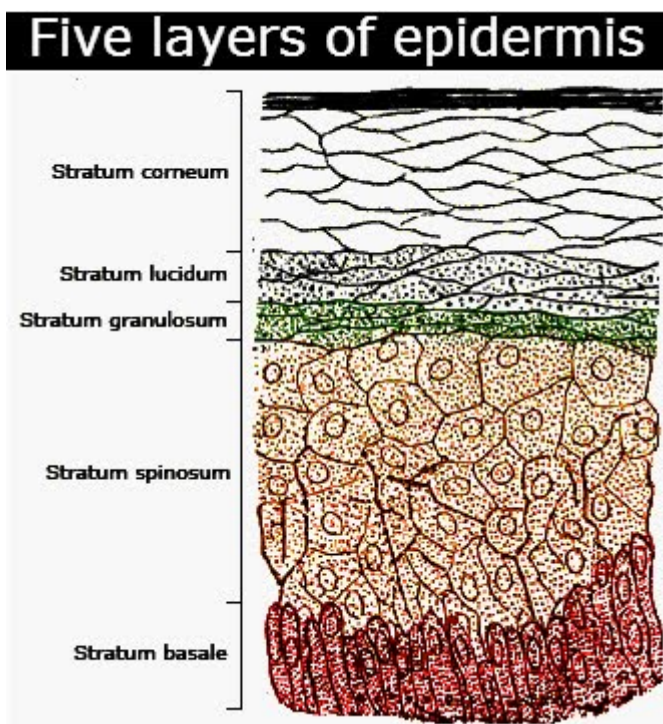
LEARN MORE: THE EPIDERMIS

Epidermis is the outermost layer of skin. While epithelium is a layer of cells covering most of the organs separately (eg. epithelium of digestive system and epithelium of respiratory system), the epidermis itself consists of a layer of epithelial cells (epithelium). The mnemonic "Come, Let's Get Sun Burned" will let you not forget the layers of the epidermis.

nurseslabs.com
 FOR ALL YOUR NURSING NEEDS

FB.com/nurseslabs
 @nurseslabs
 +Nurseslabs
 pinterest.com/nurseslabs

SEE ALL MNEMONICS AND TIPS AT:
<http://nurseslabs.com/mnemonics>



p. 100

- **C**- 3/4 of epidermis; 20-30 cells thick; keratinized
- **L**- means "clear layer"; found on hairless skin where callouses form; keratinized
- **G**- keratinocytes (produce keratin) for waterproofing
- **S**- daughter cells; keratinocytes; spiny appearance; early stage of keratinization
- **B**- millions of new cells produced daily; alternatively named germinativum

